

EMTB1000-RR Magnetic Card

Introduction

Magnetic Card + TM card dual combination door lock

Magnetic card & TM card dual combination door lock is designated well achieving the international standard. Fully utilizes the attributes of magnetic card like cost efficient, high promotional potential, together with the highly demanded security and long life cycle. It not only promotes the hotel image, but also meets the managerial needs. Developed upon the basis of pure magnetic card lock, utilized TM mortise secure attributes, long working life cycle and relatively low cost of magnetic card, as well as its convenient portable attributes, organically combined the advantages of TM card and magnetic card.

Hotel internal staffs card

USA TM encrypted card adopted, for example management card, main control card, floor card, room service card etc. TM card (Touch-Memory) is strong in encryption and high sense of security. Integrated circuit used is covered by stainless steel case. High damage resistance and longer life cycle, with normal operation at least 5 years.

Client's card

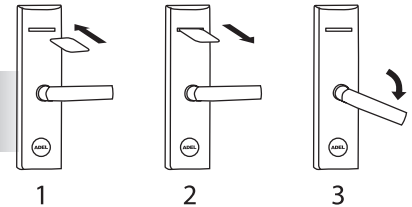
Magnetic card adopted as Smart card. By making use of the benefits of the cost efficiency and user-friendly of magnetic card, the wide range of advertisements can be promoted by the hotel. In addition, it can prevent the hygiene and bacteria infections problems that lead by the prolonged usage.



Technical parameters

- Working voltage:** DC 6V (4 x AA battery)
- Static consumption:** <120uA
- Dynamic consumption:** 110mA – 150mA
- Battery life:** 15,000 times of normal operations
- Low voltage alarm:** Three "beep" sounds alarming while the voltage is lower than 4.5V.
- Emergency Switch on:** Unaffected by any situations, even with the deadbolt is locked.
- Opening Time:** Can be opened for once after the handle is pushed, auto-lock will be done if it is left for 10 seconds; if the door is opened and left after 10 seconds without closing, the lock will start to buzz for the reminder of closing.
- Reliability:** Operate 1000 times of card insertions continuously without error.
- Unlocking record: Audit trail records the latest 864 lock openings including mechanical override
- Mechanical key:** The override prompts emergency opening when electronic key is invalid while the lock is in the status of double-lock.
- Installation Requirements:** Door thickness 38mm-55mm. If there are any declarations on the edge of the door, the declaration should be spaced at least 105mm with the door edge.

How to use Magnetic Card



Specification

- In accordance to ISO7811 International Standard
- Manufacturing mechanism:** PVC surface with magnetic pieces
- Working Temperature:** 0 ~40 C
- Working Humidity:** 20% ~ 95%
- Card reading method:** Manually plug in

